

# Goels Plaza

Banquet & Conference Center



*Your Event,  
Your Way.*

*We'd Love to Hear  
From You!*

(919) 469-8777  
contact@goelsplaza.com  
www.goelsplaza.com

**Schedule a tour:**  
M-F 9AM-5PM  
Weekends (by appt. only)

Weddings & Receptions  
Engagement Parties  
Bridal & Baby Showers  
Social Gatherings  
Religious & Cultural Events



*Located in the Heart  
of the Triangle*

117 International Dr.  
Morrisville, NC 27560

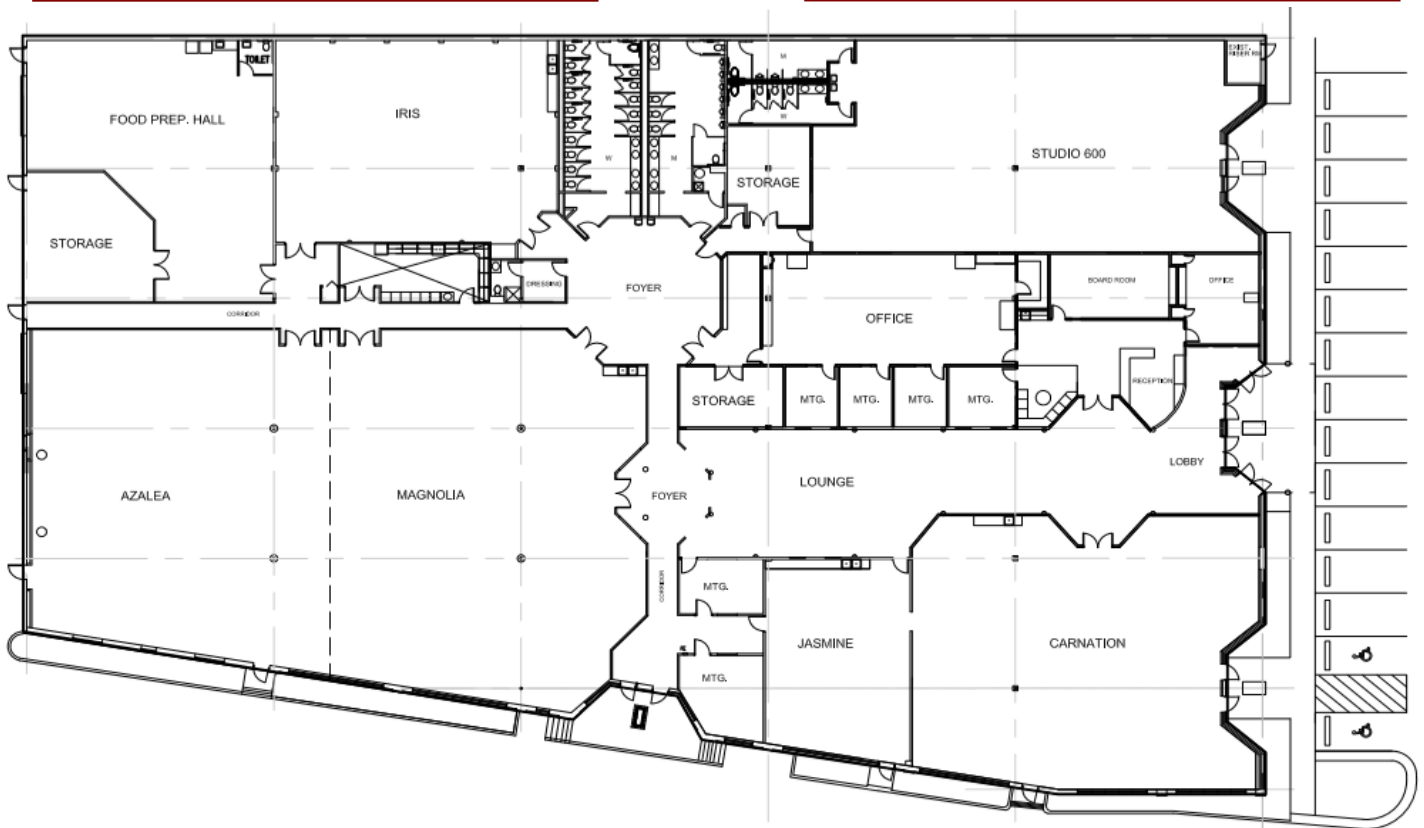
Conveniently located near  
RDU Airport

Accommodates 50-1000  
guests



# Available Services

Thank you for your interest in having your event with us here at Goels Plaza Banquet and Conference Center! Whether you are planning a grandiose reception or a simple gathering over the weekend, we offer the ideal atmosphere at an affordable price to host your social event with ease. The elegant ambience, courteous staff, and convenient location creates the perfect setting for your arrangement. We will go above and beyond to make your special day the memory of a lifetime.





# Ballroom Options & Pricing (2022–2023)

Ballroom	Max Seated Capacity #	Mon-Fri Daytime	Mon-Thurs Evenings	Friday Evenings	Weekends/Holidays	Extra hours before 12 AM	Extra hours after 12 AM up to 1 AM	<b>What's included?</b>
		8 AM-5 PM*	5 PM-12 AM*	5 PM-12 AM*	8 AM-12 AM*	AM	to 1 AM	
Jasmine	60	TBD	TBD	TBD	TBD	TBD	TBD	<b>6-continuous hours rental</b>  2 Hour (complementary) Set-up during business hours  Wireless Internet  Allocated Tables & Chairs and Standard Set-Up & Tear-Down of the rented items**  <b>**Linens &amp; table settings not included</b>
Iris	150	TBD	TBD	TBD	TBD	TBD	TBD	
Studio	200	TBD	TBD	TBD	TBD	TBD	TBD	
Carnation	225	TBD	TBD	TBD	TBD	TBD	TBD	
Magnolia	275	TBD	TBD	TBD	TBD	TBD	TBD	
Grand	600	TBD	TBD	TBD	TBD	TBD	TBD	

\*Maximum hours available, to pick from

# Room capacity is based on tables and chairs only in the room. No other access-

## Additional Rentals

Description	Cost	Description	Cost
<b>ADDITIONAL ROOMS</b>		Pre-Event Setup Time, per hour: \$125—\$175	
Food Prep Area (rental duration)		Post-event Tear down during biz hours, per hr: \$100—\$150	
Lounge (rental duration)		<b>AUDIO / VISUAL</b>	
Dressing Room (rental duration)		LCD Projector with 8' x 8' Screen	
Board Room (rental duration)		LCD Projector & 10' Screen (Azalea Room only)	
Post-event clean-up or additional setup/teardown		PA System:	
<b>ROOM ACCESSORIES</b>		Karaoke with Wired Microphone	
Dance Floor – Small (12' x 12')		Microphone Wired/Wireless (w/o PA system)	
Dance Floor – Medium (15' x 15')		TV with DVD Player/Rom	
Dance Floor – Large (22' x 22')		<b>LINENS</b>	
Dance Floor – XLarge (24' x 30')		Square Table Cloth 85" ea.*	
Elevated Stage - Small (8' x 8')		Round Table Cloth 120", ea.*	
Elevated Stage - Medium (8' x 16')		Table Skirt (White/Ivory/Black), ea.	
Elevated Stage - Large (12' x 16')		Chair Cover with House Sash, ea.	
Elevated Stage - XLarge (16' x 16')		(Includes setup and teardown)	
Standard Backdrop Curtain		<b>FOOD &amp; BEVERAGE</b>	
Executive Podium		Outside Catering Fee, PP	
Guest Registry Table		Bar Station+ Frige(with out any supplies or staff)	
Additional Tables		Private Permit Beer/Wine/Liquor, each	
Additional Chairs		(per guest; subject to ABC Permit)**	
Honoree Royal Chair, ea. (max. 2)		Water/Soda/Juice/Tea/Coffee, PP (2 hrs.)^	
Red Carpet Runner, ea. (50' x 4')		Punch Fountain, PP (min. 100) (up to 4 hrs.)	
Stanchions, ea.		Chocolate Fountain, PP (min. 200)	
Easel		(up to 3 hrs.)	
Flipchart*		Coffee/Snack Break, PP (2 hrs.)^	
<b>TABLE SETTING</b>		Continental Breakfast, PP (1.5 hrs.)^	
Centerpiece – Standard, ea.		Premium Hot Breakfast, PP (1.5 hrs.)^	
Centerpiece – Deluxe, ea.		Boxed Lunch with Beverage, PP^	
Centerpiece – Premium, ea.		Hors d' oeuvres Standard, PP (3 hrs.)^	
Table Number with Stands, ea.		Hors d' oeuvres Premium, PP (3 hrs.)^	
Water Pitcher, ea.		BBQ Package, PP (2 hrs.)^	
China Package – Disposable Premium, PP*		Std. Buffet & disposable China, PP (2 hrs.)^	
<b>LABOR</b>		Premium Buffet & Disposable China, PP (2 hrs.)^	
“Day of” Event Coordinator		Assorted Cakes, PP^	
Event Staff (per hour)			
Security/Police Officer (per hour)			
Bartender (per hour)			

Discount available for gathering of 100 guests or less, towards your package on Iris, Carnation, Magnolia, or Grand Ballrooms.

\*Weekday setup must be between 9AM-5PM on the previous business day, subject to availability. For 'Additional Rentals', pricing does not include 7.25% sales tax (\*) and/or 8.25% FBT (^) and delivery fee on certain items. \*\*Private Permit obtainers must hire security, seek permit, and purchase alcoholic beverages at their own cost. Prices are subject to change without notification, unless signed into a contract. Facility must be completely vacated and shut down before 12:00 AM. Availability of rooms and number of guests allowed subject to local laws and regulations; this will be determined at the time of reservation, as well as reassessed before the event occurs.



# *Your Event, Your Way*



We hope the information within has provided you with an idea of the flexible and exceptional service we are excited to provide. We would be delighted to schedule a consultation with you to ensure all of your needs are met. Please let us know if you would like for us to hold your date as event dates continue to fill up. From our team to yours, we look forward to working with you in hosting *your event, your way!*

Rated among “Top-5 banquet facilities in the Triangle area”  
- Triangle Business Journal

